

Food



YONGLI – Engineer your movement



company·product·quality·application

Food processing belts

YongLi has always been focused on increasing hygiene standards within the food industry. Strict production process control and Quality checks ensure that our products can be used under high environmental requirements.

Our conveyor belt products for food industry include:

- Polyvinyl chloride (PVC) FDA grade belt
- Polyurethane (PU) belt
- Polyethylene (PE) belt
- Thermoplastic polyester(Hytrel) belt
- Silicone belt



We provide various different kinds of belts which must be suitable for your application, such as Bakery and Cookie, Vegetable and Fruits, Poultry and Seafood and Confectionery etc.

By continuous improvements and non-stop research, YongLi food processing belts are accepted by more and more customers and become reliable, high quality products.



Quality

Safety and hygiene are the basic requirements for food industry. With the continuous experiments and research on the material and fabric, YongLi provides our customers with a full range of products which comply with all regulations (e.g. 2002/72/EC).

Characteristics

- High strength PET fabric: Good wear resistance. Long service life.
- Oil and fat resistance: Long service life.
- Longitudinal Flexibility: Small pulley support.
- Impregnated fabric: Easy cleaning. Hygiene support.
- Different surface fabric: Good release properties.
- Latitudinal extra rigid: Enhance latitudinal stability. (Optional)
- Edge capped (YongSeal): Higher hygiene requirement. (Optional)



Customized products and accessories








YongSeal can guarantee that the belt edge will bond with the belt itself completely without seam as a homogeneous unit.

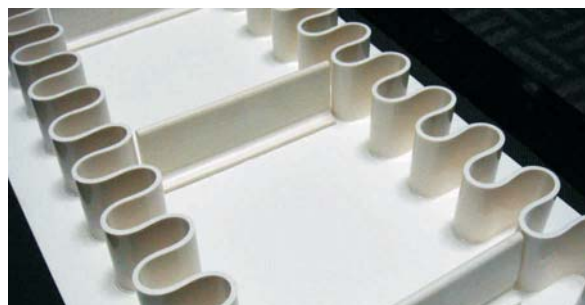
YongSeal technology can be applied on different kinds of materials, such as PVC, PU and Hytrel belts.

As hygiene standards increase, YongSeal technology can seal the edge of the belts completely and bring new characteristics to your application as follows:

- Prevent latitudinal fiber pull out.
- Avoid belt edge contamination.
- Better belt strength and stretch after long time using.
- Longer belt service time.
- Lower running costs.

Type of profiles									
Shapes	Hardness ShA	Type	Sizes b x h mm	Colour			Min.diameter		
				White	Green	Petrol	FDA Blue	Top	Bottom
PVC									
	60	D6	6x4	•	•	•	•	40	30
		D8	8x5	•	•	•	•	50	40
		D10	10x6	•	•	•	•	70	60
		D13	13x8	•	•	•	•	100	80
		D17	17x11	•	•	•	•	110	90
		D22	22x14	•	•	•	•	180	120
		D25	25x24	•	•	•	•	180	130
		D30	30x18	•	•	•	•	200	150
	60	T10	10x10	•	•	•	•	40	
		T20	20x20	•	•	•	•	90	
		T30	25x30	•	•	•	•	120	
		T40	25x40	•	•	•	•	120	
		T50	25x50	•	•	•	•	120	
		T60	40x60	•	•	•	•	150	
		T75	45x75	•	•	•	•	160	
		T80	47x80	•	•	•	•	180	
		X30	25x30	•	•	•	•	40	
		X40	30x40	•	•	•	•	60	
		X50	30x50	•	•	•	•	80	
		X60	35x60	•	•	•	•	80	
		X70	40x70	•	•	•	•	100	
	60	X80	43x80	•	•	•	•	120	
		X35	28x35	•	•	•	•	130	
		PU							
	65	UD6	6x4	•	•	•	•	120	120
		UD8	8x5	•	•	•	•	120	120
		UD10	10x6	•	•	•	•	120	120
		UD13	13x8	•	•	•	•	100	70
	86	UT10	8x10	•	•	•	•	30	
		UT20	10x20	•	•	•	•	35	
		UT30	15x30	•	•	•	•	40	
		UT40	15x40	•	•	•	•	40	

Sidewalls									
Hardness ShA	Thickness mm	Width w mm	Pitch f mm	Type	Height H mm	Colour			Min. Diameter mm
						White	Green	FDA Blue	
PVC									
60	3.0	30	26	SW30-30	30	•	•		60
				SW30-40	40	•	•		80
				SW30-50	50	•	•		100
				SW30-60	60	•	•		120
60	5.0	55	65	SW50-50	50	•	•		120
				SW50-60	60	•	•		140
				SW50-70	70	•	•		140
				SW50-80	80	•	•		160
				SW50-90	90	•	•		160
				SW50-100	100	•	•		180
				SW50-110	110	•	•		180
				SW50-120	120	•	•		180
PU									
86	1.3	20	24	USW13-20	20	•	•	•	30
				USW13-25	25	•	•	•	40
				USW13-30	30	•	•	•	50
				USW13-35	35	•	•	•	60



YongLi provides customized products, including: Special sharp Guideropes, special sharp Cleats and reinforced cleats (with fabric inside).

* For further information, please contact our salesman.

Baked goods

YongLi has a wide range of conveyor belts, which are made of different kinds of materials.

Our PVC FDA series belts comply with all regulations (e. g. 2002/72/EC) and are used in the packaged goods transfer process. It has a good resistance to fat and oil.

Our PU belts are widely used in the manufacturing process of Biscuit, Flatbread, Puff pastry, Potato chips and other expanded salty snacks.

With the rapid development of the bakery process machinery industry, the applications of conveyor belt are much wider than ever before. YongLi products support the processes of: cooling conveying, dough loader, moulder, rotary cutter, inclined/declined conveying, inspection line, metal detector line and check weighing.



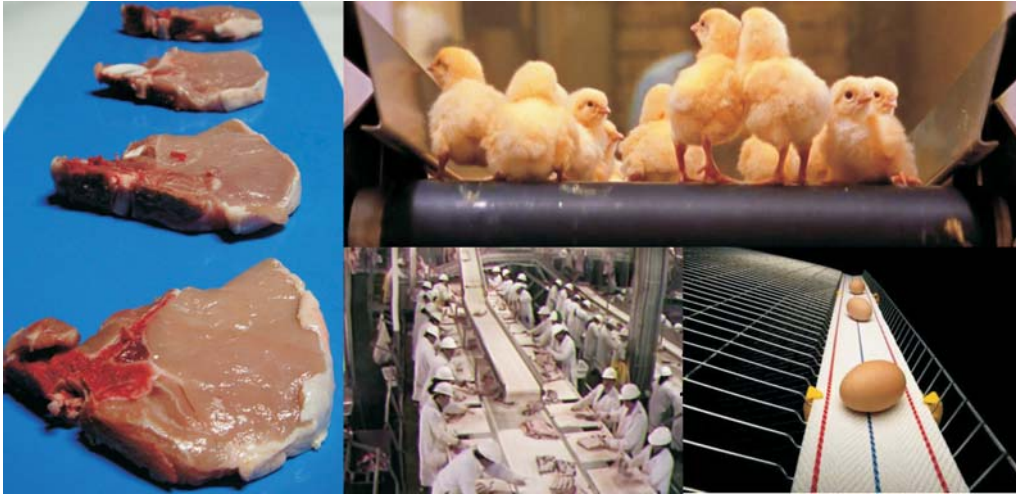
Confectionery

YongLi products have good release properties even for sticky goods, reliable positioning of products on the belt, high longitudinal flexibility to work under small pulley diameters, good anti-abrasion, chemical and oil resistance.

We offer solutions for different manufacturing processes, such as cooling tunnels, metal detecting, general conveying, inclined conveying, lifting, packaging and weight checking.

YongLi also provides different fabricated belts for special conveying requirements for this industry, such as sidewall, cleats and guideropes which are made of PVC food grade or PU. For further information and know-how for these fabricated belts, please contact our salesman.





Meat and Poultry

Conveyor Belts are standard products widely used in the meat and poultry industry.

YongLi has always devoted itself to provide extensive solutions which allow our customers to choose the best product for their application.

Blue does not occur in natural foodstuffs. So, our Blue PVC FDA belt and Blue PU belt are widely used here, they are more recognizable from the traditional white belt and are suitable for both human vision checking and optical sorters.

By non-stop efforts and improvements, YongLi would like to provide our customers with the most suitable products whatever applications: slaughtering, cutting, deboning, weighing, grading, portioning, shrinkwrapping, labelling or packaging

PVC FDA series:

- Oil & fat resistant
- Food Grade
- Many different top patterns

PU belts

- Cut & impact resistant
- Very good oil & fat resistant
- FDA
- Longitudinal extra rigid (Optional)
- Low elongation fabric (Optional)



Fruit and Vegetables

During the processing and conveying, stability and high efficiency are extremely important. YongLi provides PVC and PU belt with different kinds of auxiliary parts, such as Cleats, Guideropes, Sidewalls etc.

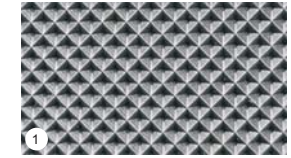
To maximize the productivity, we concentrate to improve the belt quality to meet the special requirements of this industry. Low elongation in longitudinal direction in moist environments, good resistance to fruit and vegetable acids(carotene, citric acid, Malic Acid etc) and fruit and vegetable alkali (Theophylline, Bean alkali etc)

Technical data sheet

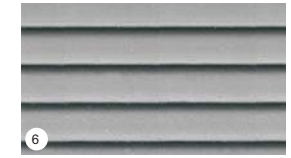
Food processing belts	Article number	Number of plies	Colour	Pattern	Total thickness	Cover thickness	Cover hardness	Weight	Effective pull at 1% elongation	Min. diameter	Temperature range	Standard production width	Type of Support	Lateral stability	Suitable for curves	Flame retardant	YongSeal® available	Oil and fat resistant	Suggested applications				
																			Bakery and bread	Meat and poultry	Confectionery	Fruit and vegetables	Fish and seafood
																			6D	Top/Bottom	mm	Top/Bottom	mm
Standard PVC FDA belts																							
P21-29/0H FDA	123036	2	White	Smooth/Diamond	4.9	2.0/1.0	80/80	6.3	12	100	-15/+80	3000	RT										
P31-29/0H FDA	134002	3	White	Smooth/Diamond	6.2	2.0/1.0	80/80	7.8	15	120	-15/+80	3000	RT										
Oil and fat resistant PVC FDA belts																							
P12-24N FDA	211003	1	White	Smooth	1.0	0.5	65	1.1	5	10	-10/+80	3000	RS										
P12-84N FDA	211004	1	FDA Blue	Smooth	1.0	0.5	65	1.1	5	10	-10/+80	3000	RS										
P12-21N FDA	212008	1	White	Smooth/Diamond	2.0	0.6/0.9	65/85	2.0	5	35	-10/+80	3000	RS										
P11-21N FDA	212007	1	White	Smooth/Diamond	2.0	0.6/0.9	65/85	2.0	6	35	-10/+80	3000	RST										
P21-24N FDA	222001	2	White	Smooth	2.0	0.5	65	2.1	12	30	-10/+80	3000	RST										
P25-24N FDA	222028	2	White	Smooth	2.0	0.5	65	2.1	8	30	-10/+80	3000	RS										
P25-84N FDA	222029	2	FDA Blue	Smooth	2.0	0.5	65	2.1	8	30	-10/+80	3000	RS										
P22-24N FDA	222030	2	White	Smooth	2.4	0.7	65	2.7	10	40	-10/+80	3000	RS										
P22-84N FDA	222031	2	FDA Blue	Smooth	2.4	0.7	65	2.7	10	40	-10/+80	3000	RS										
P25-25N FDA	222032	2	White	Smooth	3.0	1.2	65	3.5	8	50	-10/+80	3000	RS										
P25-24/1N FDA	222033	2	White	Diamond	2.1	0.7	65	1.8	8	30	-10/+80	3000	RS										
P22-24/31N FDA	222026	2	White	Sandblast	2.5	1.0	65	2.5	10	40	-10/+80	2000	RS										
P22-25/12N FDA	222027	2	White	Mini grip	2.7	1.2	65	2.7	10	45	-10/+80	2000	RS										
P22-26/6RN FDA	222034	2	White	Saw tooth	4.8	3.0	35	5.2	10	60	-10/+80	1450	RS										
P22-26/11N FDA	222035	2	White	Crescent	5.0	3.2	55	6.1	10	80	-10/+80	2000	RS										
P22-26/14RN FDA	222018	2	White	Fishbone	4.8	3.0	35	5.2	10	60	-10/+80	1450	RS										
P22-28/0N FDA	223014	2	White	Matt/Matt	3.0	0.7/0.7	65/65	3.5	10	60	-10/+80	3000	RS										
P25-21N FDA	223010	2	White	Smooth/Diamond	2.7	0.4/0.8	65/85	2.6	8	40	-10/+80	3000	RS										
P22-21N FDA	223016	2	White	Smooth/Diamond	3.1	0.7/0.8	65/85	3.2	10	50	-10/+80	3000	RS										
P21-21N FDA	223015	2	White	Smooth/Diamond	3.1	0.7/0.8	65/85	3.2	12	50	-10/+80	3000	RST										
P22-81N FDA	223008	2	FDA Blue	Smooth/Diamond	3.1	0.7/0.8	65/85	3.2	10	50	-10/+80	3000	RS										
P32-24N FDA	233012	3	White	Smooth	3.9	1.0	65	4.3	13	100	-10/+80	3000	RS										
P31-81N FDA	234002	3	FDA Blue	Smooth/Diamond	4.6	0.7/0.8	65/85	5.0	15	100	-10/+80	3000	RST										
P32-81N FDA		3	FDA Blue	Smooth/Diamond	4.6	0.7/0.8	65/85	5.0	13	100	-10/+80	3000	RS										
Fabric belts FDA																							
P21(3)-07N	221001	2	-	Cotton/Polyester	1.8	-	-	1.7	8	20	-10/+80	3000	RS										
P22-07N	221002	2	-	Polyester/Polyester	1.8	-	-	1.7	10	20	-10/+80	3000	RS										
P23-07N	221003	2	-	Cotton/Cotton	1.8	-	-	1.7	5	20	-10/+80	3000	RST										
P27-07N	221004	2	-	Cotton/Cotton	2.8	-	-	2.4	6	40	-10/+80	2000	RS										
P33-07N	232002	3	-	Cotton/Cotton	2.9	-	-	3.1	7	60	-10/+80	3000	RST										
TPU coated belts																							
U12-64BA	311013	1	Honey	Smooth	0.8	0.3	86	0.8	4	3	-20/+80	2000	RS										
U12-24/OBA	311016	1	White	Matt	0.8	0.3	86	0.8	4	3	-20/+80	2000	RS										
U12-24GA	311025	1	White	Smooth	1.2	0.3	86	1.0	4	8	-20/+80	2000	RS										
U12-24/1A	311005	1	White	Diamond	1.2	0.7	86	1.1	4	10	-20/+80	2000	RS										
U12-84/OBA	311022	1	FDA Blue	Matt	0.8	0.3	86	0.8	4	3	-20/+80	2000	RS										
U2-2A	300002	2	White	Smooth	1.4	0.3	86	1.2	12	10	-20/+80	2000	RS										
U2-8A	300008	2	FDA Blue	Smooth	1.4	0.3	86	1.2	12	10	-20/+80	2000	RS										
U22-24RA	322004	2	White	Smooth	1.5	0.3	86	1.6	8	8	-20/+80	2000	RS										
U22-24/ORA	322010	2	White	Matt	1.5	0.3	86	1.6	8	8	-20/+80	2000	RS										
U22-24/1RA	322006	2	White	Diamond	2.0	0.7	86	1.8	8	20	-20/+80	2000	RS										
U22-84RA	322013	2	FDA Blue	Smooth	1.5	0.3	86	1.6	8	8	-20/+80	2000	RS										
U22-05NGA	301012	2	Transp.	Smooth	3.8	1.5	93	4.0	10	80	-20/+80	2000	RS										
Fabric belts TPU impregnated																							
U22-07BAI	321002	2	-	Fabric/Fabric	1.3	-	-	1.2	8	30	-20/+80	2000	RS										
U22-87BAI	321001	2	FDA Blue	Fabric/Fabric	1.3	-	-	1.2	8	30	-20/+80	2000	RS										
Silicone coated belts																							
S12-24BA	611001	1	White	Smooth	0.7	0.2	40	0.7	4	6	-40/+150	2000	RS										
S25-24U	622002	2	White	Smooth	1.7	0.2	40	1.7	8	50	-30/+100	2000	RS										
S25-24NA FDA	622003	2	White	Smooth	1.7	0.2	40	1.7	8	50	-30/+100	2000	RS										
Non-woven belt																							
P2M-07N	103005	1	White	Felt	3.0	-	-	2.3	5	40	-10/+80	2000	RS										



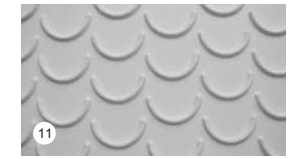
0 : Matt



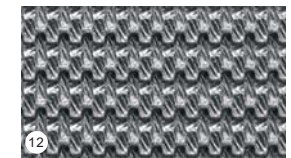
1 : Diamond



6 : Saw tooth



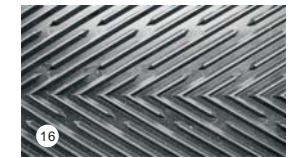
11 : Crescent



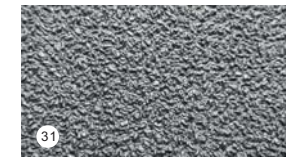
12 : Mini grip



14 : Fishbone



16 : Lati. fishbone



31 : Sandblast



SHANGHAI YONGLI BELTING CO.,LTD.

ADDRESS: WEST OF XUHUA ROAD, XUJING TOWN,
QINGPU DISTRICT, SHANGHAI, CHINA

TEL: 0086-21-59884359

FAX: 0086-21-59884382

WEBSITE: www.yonglibelt.com

EMAIL: info@yonglibelt.com



YONGLI EUROPE B.V.

ADDRESS: KOOLMAND 3, 1724 BC OUDKARPEL,
NETHERLANDS

TEL: 0031-226-399928

FAX: 0031-226-393707

WEBSITE: www.yonglibelting.com

EMAIL: info@yonglibelting.com